

## How do I know what job is right for me?

In our diverse economy, there are many ways to achieve workforce success, and they don't all follow the same straight or orderly path. Employers in Northwest Minnesota now provide over 221,000 jobs and the state has over 3 million jobs, so it can be hard to know which one might be right for you.

**Assessments and career exploration are a great way to help students and jobseekers make the best possible choices.** What things do you like to do? What's your personality style? What skills and abilities do you have? There are a variety of free career assessments available online at sites including CareerOneStop ([careeronestop.org](http://careeronestop.org)), O\*NET ([onetcenter.org](http://onetcenter.org)), and DEED (<https://mn.gov/deed/job-seekers/job-guide/>) that can help.

Knowing more about yourself is critical to career planning. People choose different jobs at different points in their lives, and for very different reasons, but no one can do it for you.

**You are in charge of your career planning process!**



## How much education or training will I need to get that job?

Graduating from high school is an important first step, but from there the path to success can go in many different directions. For example, students and jobseekers can go straight to work, into the military, on to college, start an apprenticeship, or something else, depending on your career goals.

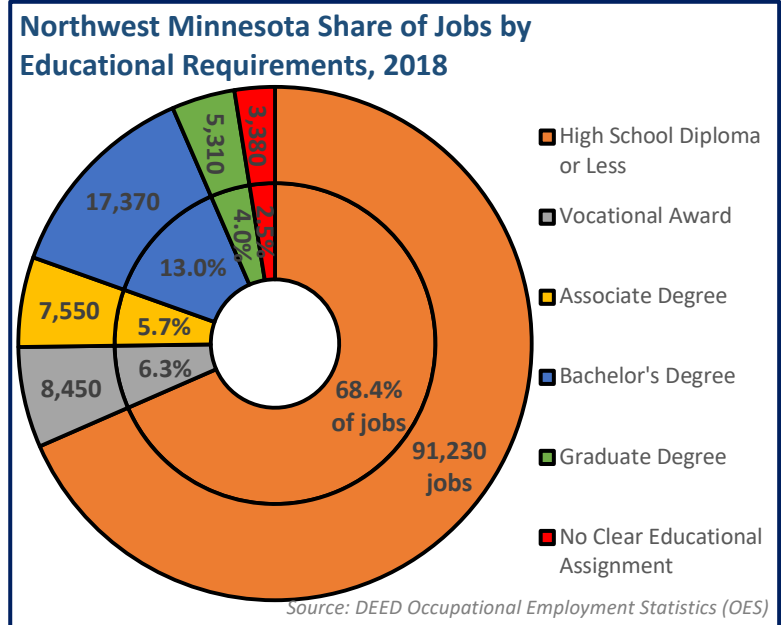


In other words, there are many pathways into the labor market. Some are short-term solutions, while others are long-term decisions. There are costs and benefits to every approach, and there are practical steps that students and jobseekers can take to make the most out of their career planning and educational investment.

It's best to pick something that you enjoy doing, and that matches your skills and personality. Once you've found something you like, it's important to know that every occupation requires some training, ranging from short-term to long-term. **Whether you go to college or not, on-the-job training and continual learning is critical to your career success.**

## Do I need to go to college?

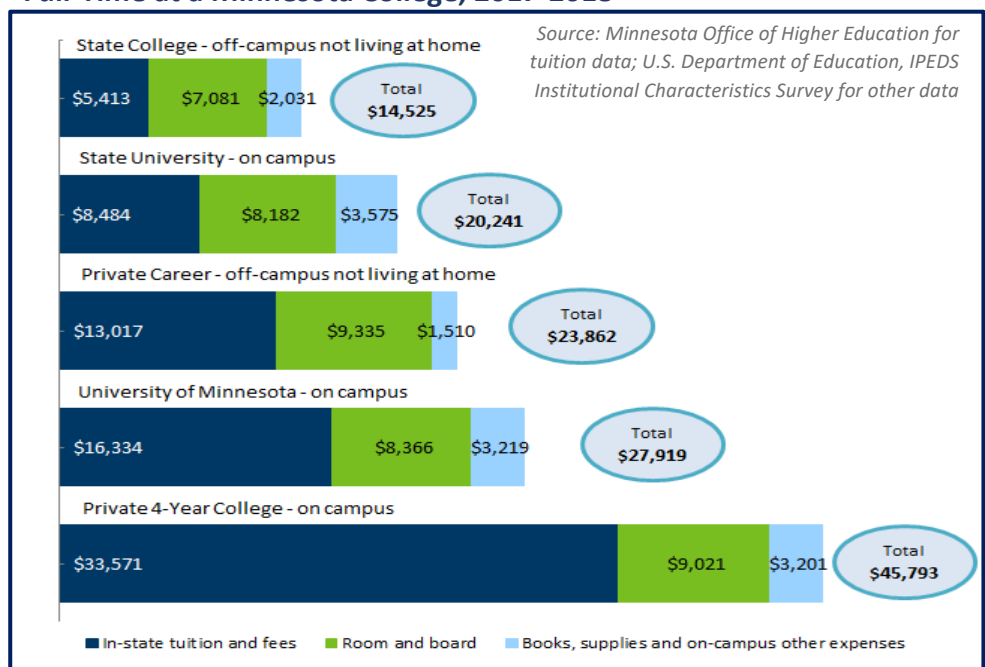
College is an excellent way to move up career ladders and open windows of opportunity to fields that would otherwise be closed, such as nursing or engineering. Many of these occupations offer high wages and are in high demand in the marketplace. Certain careers – such as dentists, lawyers, and school teachers – require a college education, while other jobs – including cost estimators, sales representatives, and correctional officers – do not. **Students and jobseekers might be surprised to learn that well over half of all jobs in Northwest Minnesota can be started with a high school diploma or less, and just over one-third require college.**



## How much does college cost?

While education is typically a worthwhile investment, **college can be expensive** – with average annual expenses ranging between \$14,500 and over \$45,000 per year in Minnesota. At that level, an associate’s degree at a state college in 2017 cost roughly \$29,000 (\$14,525 x 2 years) and a four-year bachelor’s degree at the University of Minnesota passed \$100,000 (\$27,919 x 4 years). The Office of Higher Education provides a list of tuition and fees for every college in Minnesota ([www.ohe.state.mn.us](http://www.ohe.state.mn.us)).

### Average Annual Expense for a Resident Undergraduate Attending Full-Time at a Minnesota College, 2017-2018

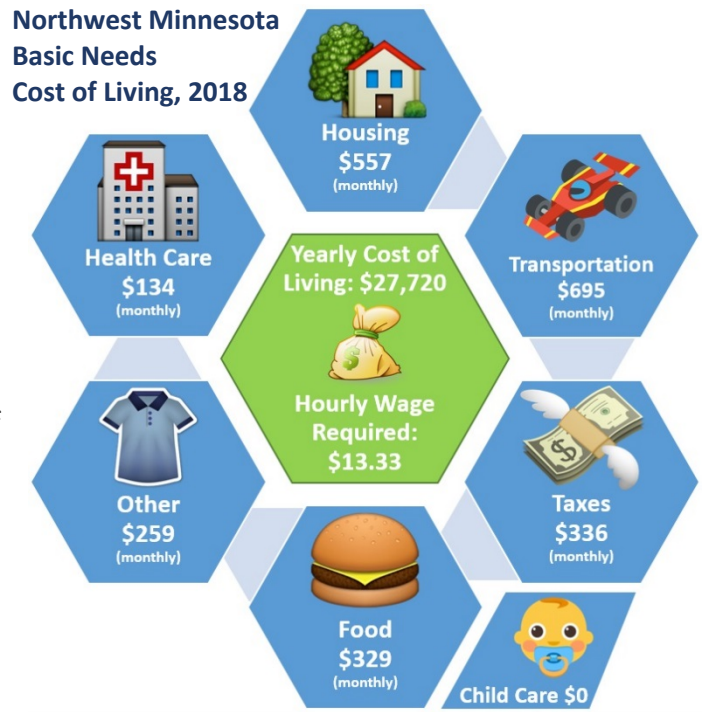


For those who go to college, your **choice of major matters** – different programs lead to different jobs that earn different amounts of money. For example, students who graduated from a Minnesota college with an associate’s degree in Registered Nursing were earning over \$60,000 within 5 years of graduating, while students with a 4-year bachelor’s degree in Parks, Recreation & Leisure Studies were earning less than \$35,000. DEED’s [Graduate Employment Outcomes tool](#) can help potential students compare the costs of college with the typical earnings of graduates from programs at every Minnesota postsecondary institution to determine if their chosen major makes financial sense.

## How much income will I need to make?

DEED's [Cost of Living tool](#) provides a yearly estimate of the basic needs cost of living in Minnesota, for individuals and families, by county, region, and statewide. The tool uses federal and state data to examine monthly living costs in seven categories: food, housing, health care, transportation, child care, other necessities, and net taxes.

According to 2018 estimates, the basic needs cost of living for a **single person** in Northwest Minnesota was **\$27,720**, which would require an hourly wage of **\$13.33** over the course of a full-time, year-round work schedule (2,080 hours). The highest costs were for housing and transportation, but of course both of those are greatly impacted by where you choose to live. Other costs would also vary based on your lifestyle, family size, and work status, and can go up or down based on your choices.

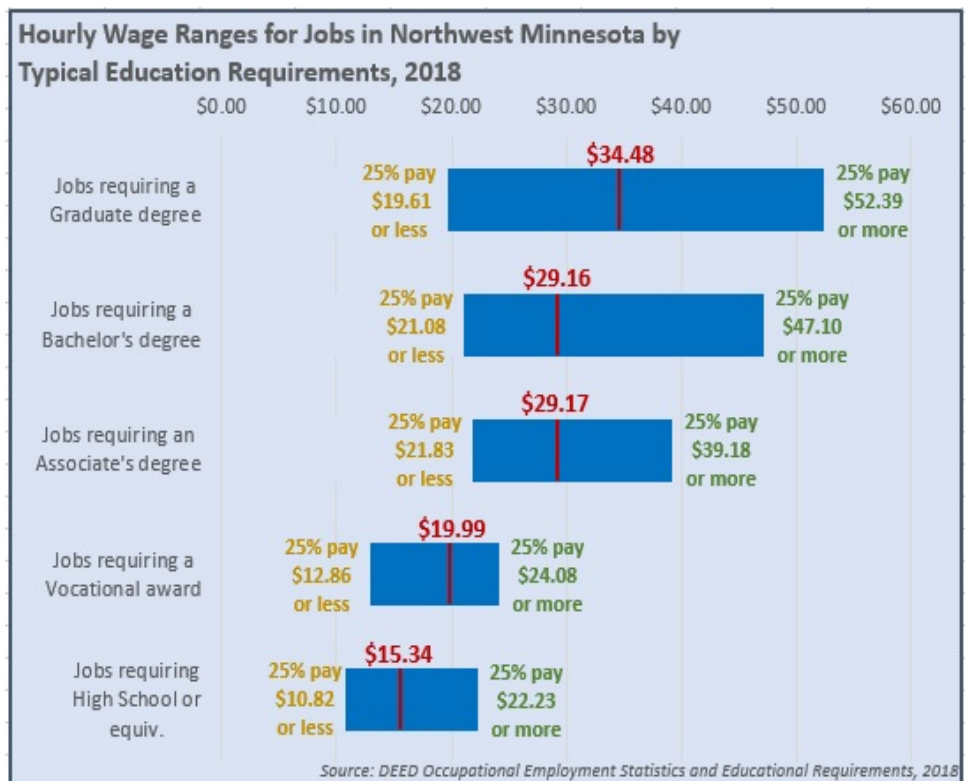


Source: DEED Cost of Living tool, 2018

## How much income will I actually make?

While income isn't the only thing that matters when choosing a career, everyone wants and needs to make money. In general, the job you choose determines the amount of money you're able to make over the course of your lifetime.

Data show that hourly wages rise for each additional level of education completed; however, it's important to see that **there are opportunities for jobs that provide livable wages at every level of education**, including many that boast strong current and future demand in your region of the state.



Source: DEED Occupational Employment Statistics and Educational Requirements, 2018

Put simply, **not all great jobs require college, and not all college graduates end up in great paying jobs.** You can find state and regional wage information for about 800 occupations in Minnesota using DEED's Occupational Employment Statistics tool (<https://mn.gov/deed/data/data-tools/oes/>).

## What jobs are in demand in my region?

According to DEED’s [Occupations in Demand tool](#), there are nearly 250 occupations showing high demand in Northwest Minnesota, with training and education requirements ranging from short-term on-the-job training to postsecondary education to advanced degrees:

Occupations in Demand by Typical Required Education in Northwest Minnesota, 2017 with (Median Hourly Wage)			
High School or Equivalent	Voc. Award or Assoc. Degree	Bachelor’s Degree	Graduate/Advanced Degree
Heavy & Tractor-Trailer Truck Drivers (\$18.90)	Registered Nurses (\$32.16)	Elementary School Teachers (\$54,461/yr)	Child, Family, & School Social Workers (\$25.31)
Retail Salespersons (\$11.35)	Nursing Assistants (\$13.34)	Secondary & Middle School Teachers (\$57,381/yr)	Education Administrators, Elem. & Secondary (\$92,065/yr)
Combined Food Preparation & Serving Workers (\$9.79)	Licensed Practical & Licensed Vocational Nurses (\$18.91)	Accountants & Auditors (\$27.78)	Physical Therapists (\$38.17)
Teacher Assistants (\$14.30)	Police & Sheriff’s Patrol Officers (\$26.85)	Financial Managers (\$43.07)	Pharmacists (\$60.24)
Cashiers (\$9.71)	Automotive Service Technicians & Mechanics (\$17.53)	Industrial Engineers (\$35.36)	Family & General Practitioners (\$91.72)
Personal Care Aides (\$11.40)	Emergency Medical Technicians & Paramedics (\$14.89)	Human Resources Specialists (\$24.02)	Mental Health & Substance Abuse Social Workers (\$22.79)
First-Line Supervisors of Retail Sales Workers (\$16.14)	Industrial Machinery Mechanics (\$22.62)	Substance Abuse & Behavioral Disorder Counselors (\$20.90)	Physician Assistants (\$53.22)
Janitors & Cleaners (\$14.08)	Machinists (\$19.61)	Mental Health Counselors (\$17.83)	Clinical, Counseling, & School Psychologists (\$30.17)
Stock Clerks & Order Fillers (\$11.42)	Dental Assistants (\$20.51)	Mechanical Engineers (\$33.64)	Nurse Practitioners (\$51.66)
Maids & Housekeeping Cleaners (\$11.44)	Industrial Engineering Technicians (\$23.71)	Medical & Health Services Managers (\$41.04)	Occupational Therapists (\$32.63)
Secretaries & Administrative Assistants (\$16.28)	Electricians (\$24.80)	Sales Managers (\$37.87)	Internists, General (>\$100.00)
Office Clerks, General (\$15.56)	Medical Records & Health Information Technicians (\$21.05)	Training & Development Specialists (\$22.89)	Veterinarians (\$29.97)
Social & Human Service Assistants (\$16.27)	Radiologic <X-Ray> Technologists (\$27.65)	Market Research Analysts & Marketing Specialists (\$26.59)	Dentists, General (\$69.68)
Home Health Aides (\$12.32)	Hairdressers, Hairstylists, & Cosmetologists (\$10.39)	Special Education Teachers (\$60,848/yr)	Healthcare Social Workers (\$25.10)
Cooks, Restaurant (\$12.71)	Tool & Die Makers (\$26.72)	Network & Computer Systems Administrators (\$31.52)	Speech-Language Pathologists (\$29.40)

Source: DEED Occupations in Demand

## Who can help me with my job search?

There are a lot of people and resources that are willing and able to help you find a job or plan for your career, but it is up to you to reach out to them and put their advice into action.

***The sooner you get started forging your path, the better!***



### CAREER INFORMATION RESOURCES IN NORTHWEST MINNESOTA:

#### Amy Sjoblad, RC3 Business Specialist

Rural Minnesota CEP, Inc.  
Brainerd WorkForce Center  
204 Laurel Street, Suite 21  
Brainerd MN 56401-3552  
Office: 218-825-6769  
Email: [amys@rmcep.com](mailto:amys@rmcep.com)  
Web: <http://www.rmcep.com/rmcep>

#### Chet Bodin, Northwest Minnesota Regional Analyst

Minnesota Dept. of Employment & Economic Development  
Brainerd WorkForce Center  
204 Laurel Street, Suite 21  
Brainerd MN 56401-3552  
Office: 218-825-2183  
Email: [chet.bodin@state.mn.us](mailto:chet.bodin@state.mn.us)  
Web: [www.mn.gov/deed/data/](http://www.mn.gov/deed/data/)