

CAREER PATHS IN INFORMATION TECHNOLOGY

4-YEAR OR MORE COLLEGE DEGREE AND/OR EQUIVALENT EXPERIENCE

Computer & Information Systems Managers
\$51.83

Computer Systems Analysts
\$32.21

Computer Programmers
\$37.50

Network & Computer Systems Administrators
\$32.52

1-2 YEAR COLLEGE DEGREE (OR CREDENTIAL)

Computer Network Support Specialists
\$25.48

Computer User Support Specialists
\$21.26

HIGH SCHOOL DIPLOMA OR GED / ON-THE-JOB TRAINING

Telecommunications Equipment Installers and Repair
\$29.49

Computer Operators
\$21.28

These jobs are in demand in Northwest Minnesota and these are Northwest Minnesota Median wages. Data collected from Department of Employment and Economic Development.

WHY CHOOSE A CAREER IN INFORMATION TECHNOLOGY?

Employment of computer and information technology occupations is projected to grow 13 percent from 2016 to 2026, faster than the average for all occupations. These occupations are projected to add about 557,100 new jobs. Demand for these workers will stem from greater emphasis on cloud computing, the collection and storage of big data, and information security.

Northwest PIC^{inc}

 Rural Minnesota CEP | concentrated employment program, inc.

CAREER PATHS IN INFORMATION TECHNOLOGY

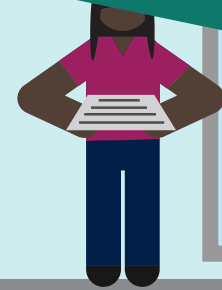
4-YEAR OR MORE COLLEGE DEGREE AND/OR EQUIVALENT EXPERIENCE

Computer & Information Systems Managers \$51.83 Plan, direct, or coordinate activities in such fields as electronic data processing, information systems, systems analysis, and computer programming.

Computer Programmers \$37.50 Create, modify, and test the code, forms, and script that allow computer applications to run. Work from specifications drawn up by software developers or other individuals. May assist software developers by analyzing user needs and designing software solutions. May develop and write computer programs to store, locate, and retrieve specific documents, data, and information.

Computer Systems Analysts \$32.21 Analyze science, engineering, business, and other data processing problems to implement and improve computer systems. Analyze user requirements, procedures, and problems to automate or improve existing systems and review computer system capabilities, workflow, and scheduling limitations. May analyze or recommend commercially available software.

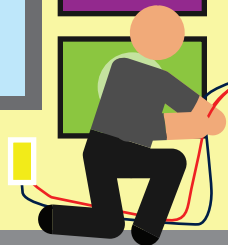
Network & Computer Systems Administrators \$32.52 Install, configure, and support an organization's local area network (LAN), wide area network (WAN), and Internet systems or a segment of a network system. Monitor network to ensure network availability to all system users and may perform necessary maintenance to support network availability. May monitor and test Web site performance to ensure Web sites operate correctly and without interruption. May assist in network modeling, analysis, planning, and coordination between network and data communications hardware and software. May supervise computer user support specialists and computer network support specialists.



1-2 YEAR COLLEGE DEGREE (OR CREDENTIAL)

Computer Network Support Specialists \$25.48 Analyze, test, troubleshoot, and evaluate existing network systems, such as local area network (LAN), wide area network (WAN), and Internet systems or a segment of a network system. Perform network maintenance to ensure networks operate correctly with minimal interruption.

Computer User Support Specialists \$21.26 Provide technical assistance to computer users. Answer questions or resolve computer problems for clients in person, or via telephone or electronically. May provide assistance concerning the use of computer hardware and software, including printing, installation, word processing, electronic mail, and operating systems.



HIGH SCHOOL DIPLOMA OR GED / ON-THE-JOB-TRAINING

Telecommunications Equipment Installers and Repair \$29.49 Install, set-up, rearrange, or remove switching, distribution, routing, and dialing equipment used in central offices or head ends. Service or repair telephone, cable television, Internet, and other communications equipment on customers' property. May install communications equipment or communications wiring in buildings.

Computer Operators \$21.28 Monitor and control electronic computer and peripheral electronic data processing equipment to process business, scientific, engineering, and other data according to operating instructions. Monitor and respond to operating and error messages. May enter commands at a computer terminal and set controls on computer and peripheral devices.

